

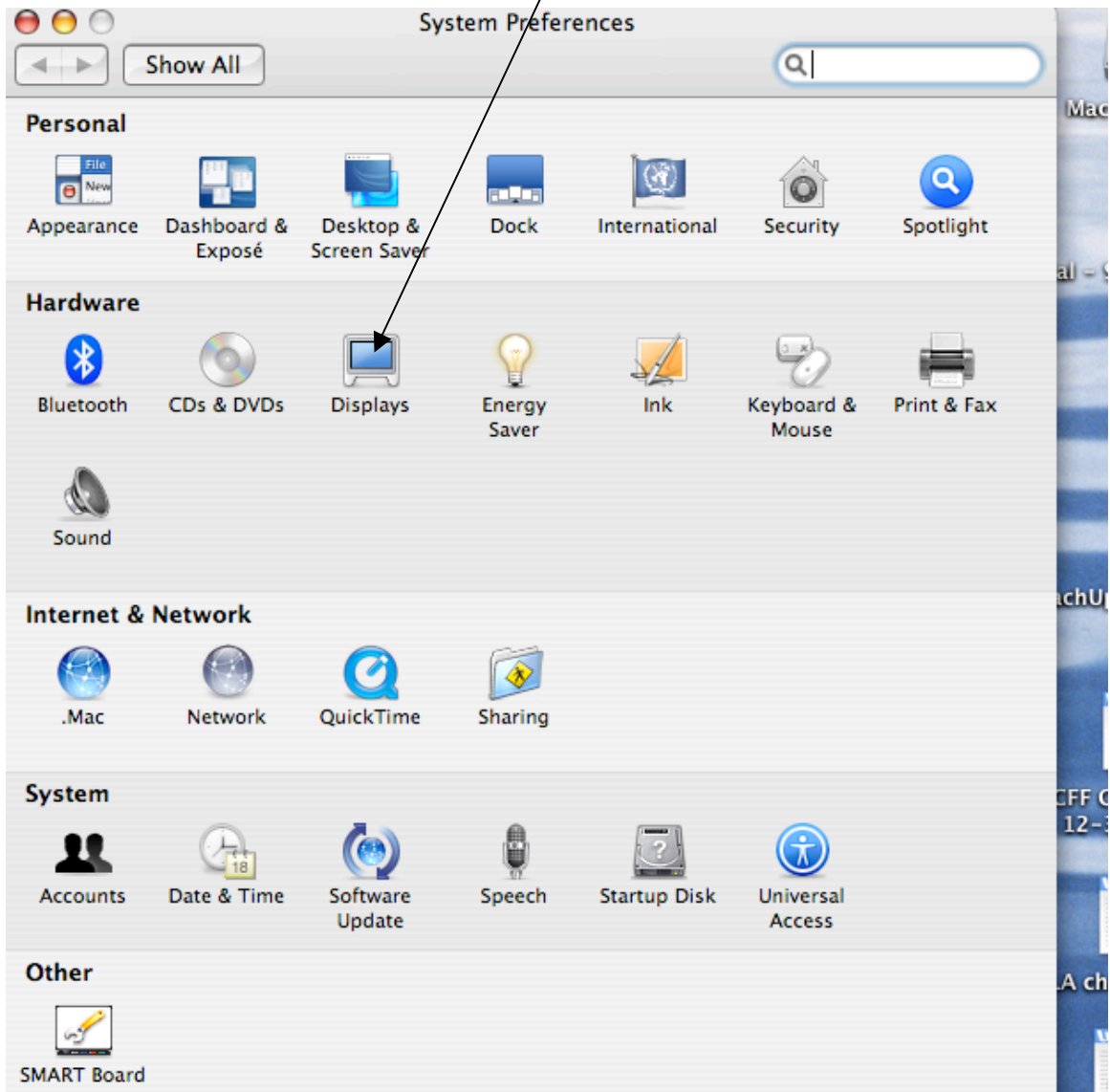
To use the Polyvision board:

1. Turn on and Log into your computer
2. Second, Plug the USB extender for Poly. into the back of your teacher workstation.
3. Plug in your projector here...using the white dongle cable

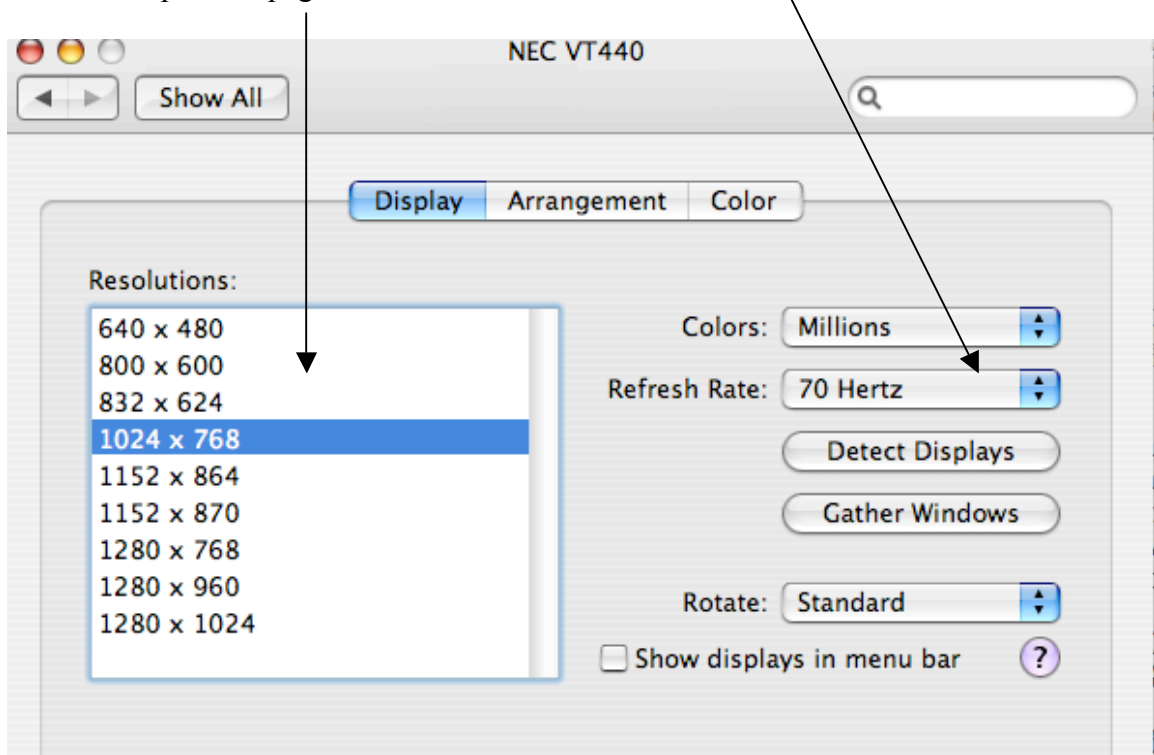


4. Your preferences should be set as follows, you should only have to do this once.

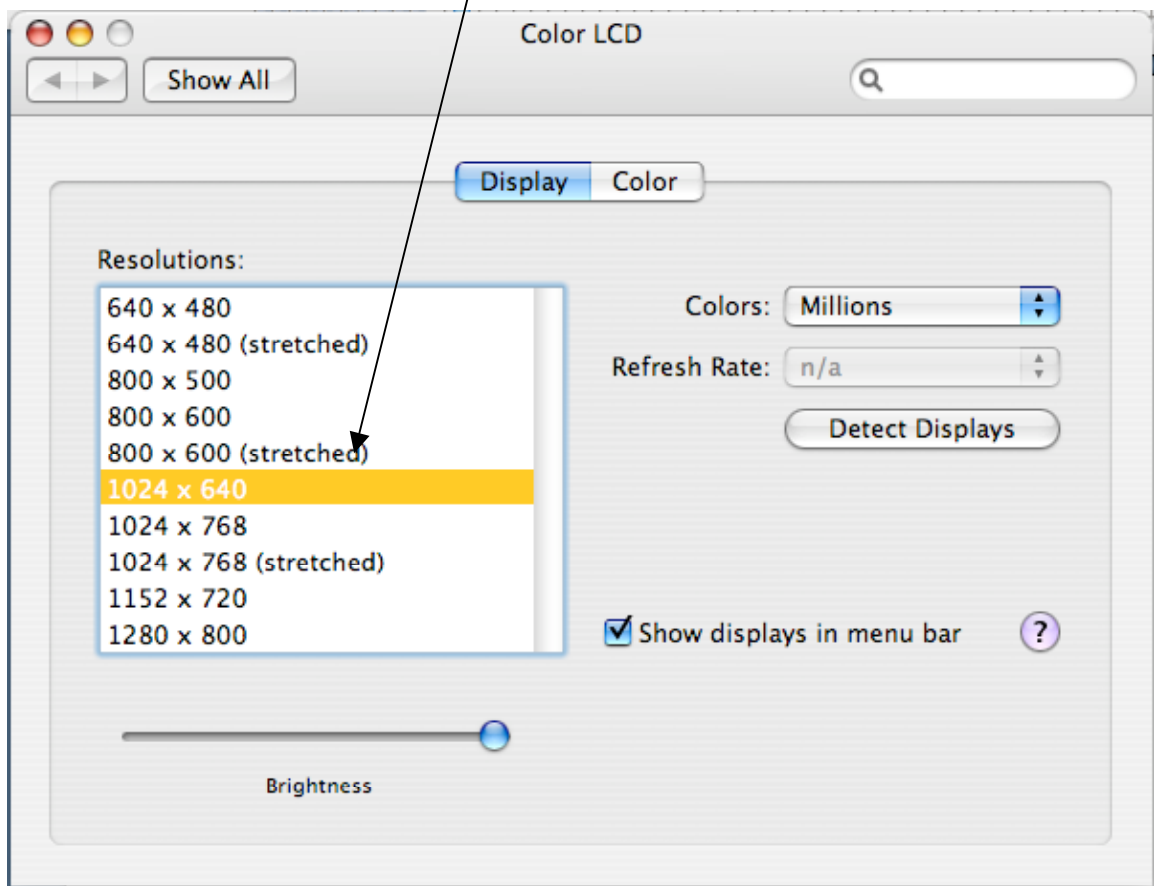
Blue apple → system Preferences → displays



5. On the Epson PJ page choose **1024 X 768** AND **70 hertz**



6. On the Color LCD page select **1024x640**

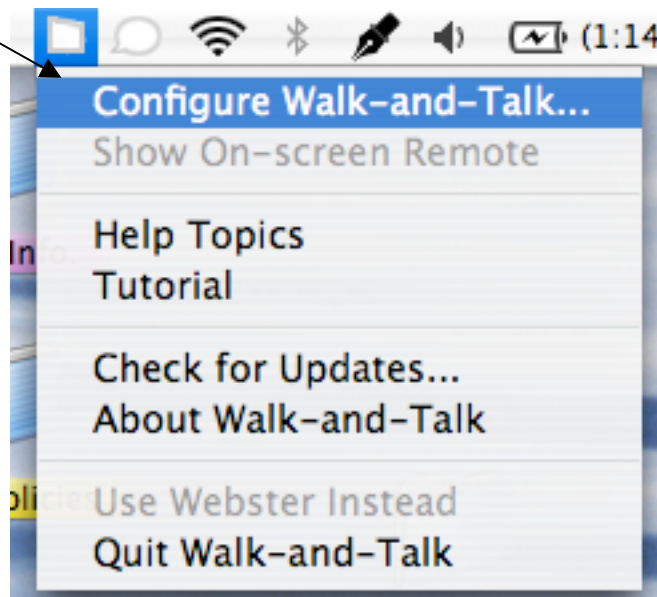


7. Close this box.

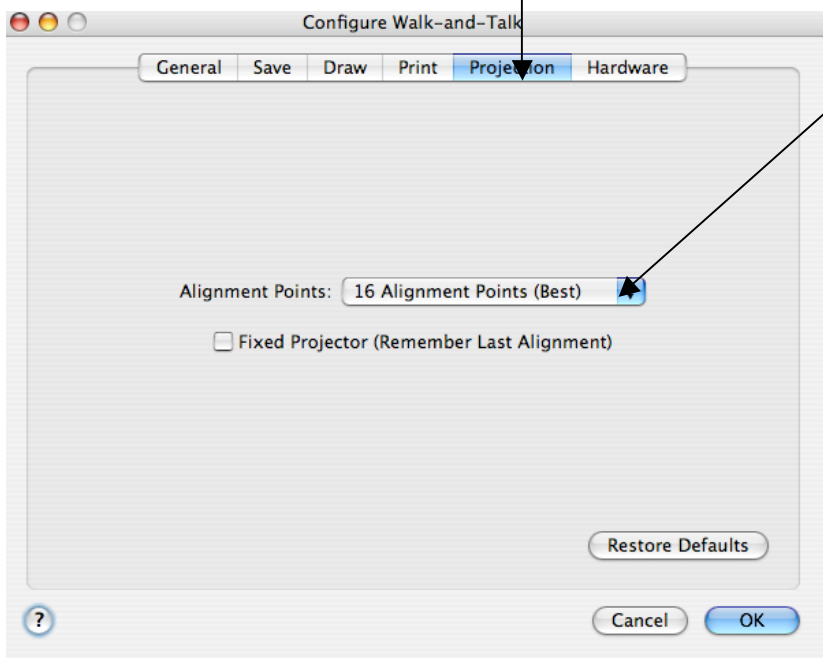
8. You will know Poly is working because the Polyvision Board icon in the upper right menu bar is darkened.



Choose **Configure Walk & Talk** from the Polyvision drop down menu.



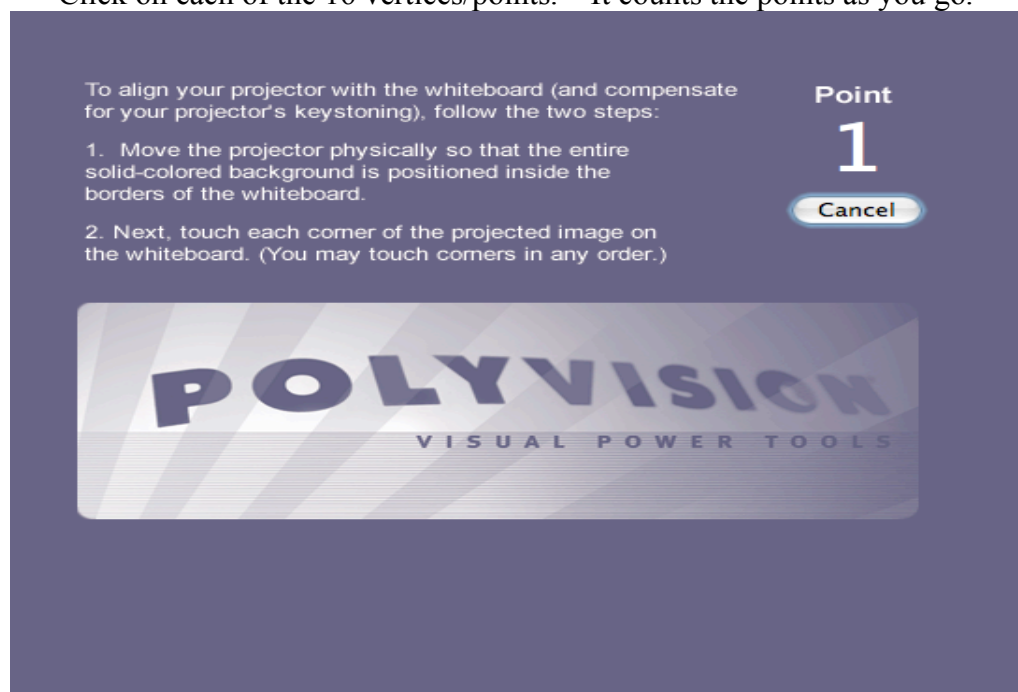
9. From this menu choose **Projection**. In the Pop up menu, choose **16 alignment points**. Lastly click on **OK**

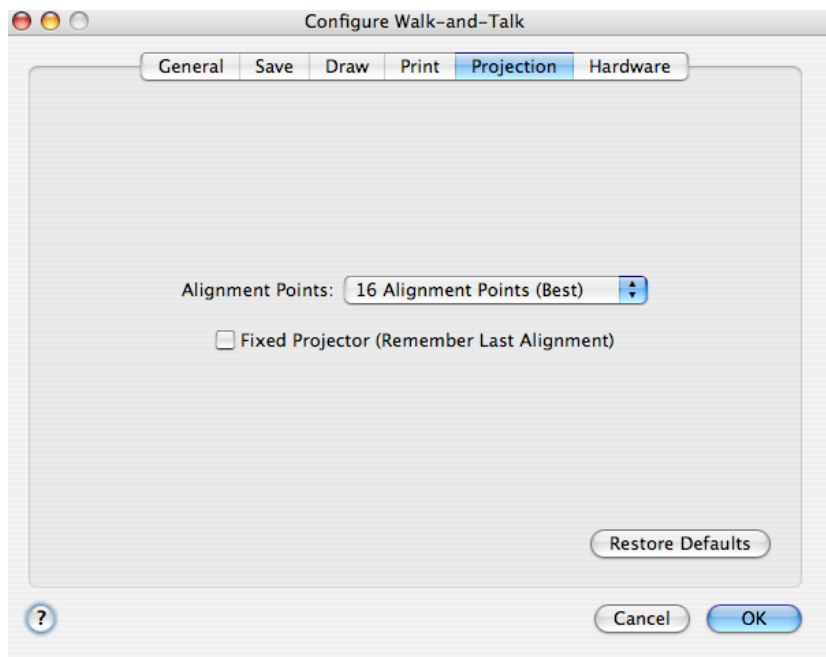


10. On your Poly. Remote click on the **Projection Button**.



11. You should now get a screen where you will begin your 16 point alignment. Click on each of the 16 vertices/points. It counts the points as you go.

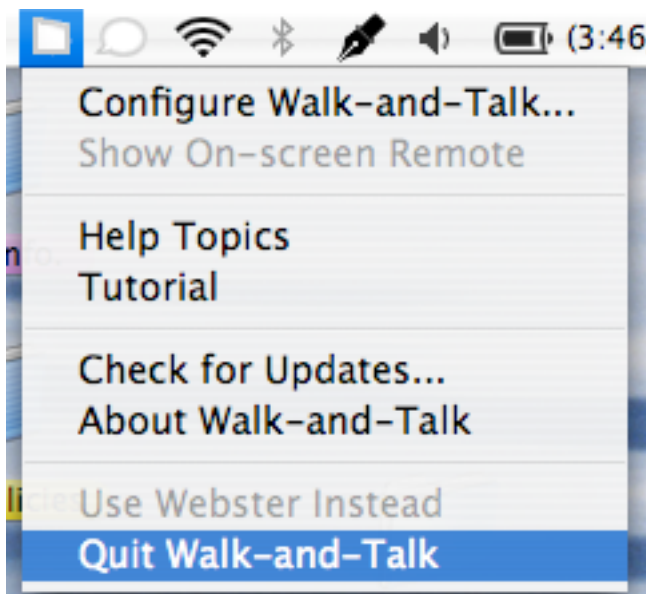




13. You are now ready to use Poly.

When Finished

Choose **Quit Walk and Talk** under the Polyvision icon.



Disconnect the USB cable from your computer.